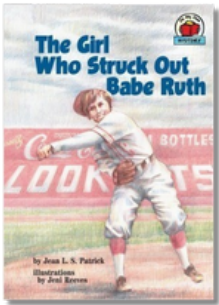


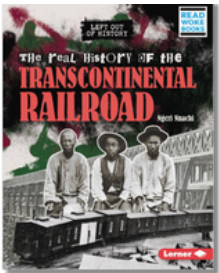
Winter Academy Discussion Guide Grade 4



1. Consider how Albert's experiences in Germany were like Marian's racial discrimination.
2. Explain why Marian chose to stay with Albert in his humble home, rather than at the fancy Nassau Inn.
3. How are you affected by Marian and Albert's story?



1. Why did Jackie Mitchell want to play professional baseball, and how did she prove herself to be just as capable as the boys?
2. What was the significance of Jackie striking out Babe Ruth? How did it change people's perception of women in sports?
3. How did Jackie's determination and confidence help her overcome challenges in a male-dominated sport?



1. How did the Transcontinental Railroad help connect the United States, and what were some of the negative effects it had on Native Americans?
2. What challenges did Chinese workers face while building the railroad, and how did they stand up for better conditions?
3. How are Chinese workers being honored today for their contributions to the Transcontinental Railroad?



1. Nicole Aunapu Mann became the first Native American woman to reach space. What do you think this accomplishment means for her and for young people, especially those from underrepresented groups?
2. Nicole's parents taught her the importance of hard work and curiosity. How do you think these values helped her succeed in becoming an astronaut?
3. Nicole worked in many areas before becoming an astronaut, such as playing soccer, studying engineering, and flying airplanes. What do you think her journey teaches us about the importance of trying different things and following your interests?